

# SUPPORTING FAMILIES

## NEWSLETTER



Hello there!

Alison Hopkins, Deputy Head at  
Wyre Forest School.

As part of the safeguarding team,  
my role is to ensure that all our  
pupils are safe and that families  
are well supported

If you have any concerns about  
keeping your child safe, your child's  
attendance or would like some  
advice or support regarding an  
issue at home please contact me at  
[ahopkins@wfs.worcs.sch.uk](mailto:ahopkins@wfs.worcs.sch.uk)

Family Front  
Door

01905 822666

Dial this number if  
you are concerned  
that a child is at  
risk of **SERIOUS  
HARM**

## Supporting Families Team



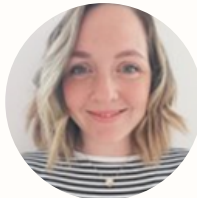
Donna Lester - Senior Family Support Worker -  
All year round

I am situated at the front gate at the start and end of  
each school day, please come and speak to me about any  
concerns. Alternatively, email me on  
[dml31@wfs.worcs.sch.uk](mailto:dml31@wfs.worcs.sch.uk)



Hannah White - Challenging Behaviour Family Support -  
Mon, Tues, Wed, Thurs

I am working closely with the schools' behaviour lead to  
support families with concerns around behaviour. Please  
don't hesitate to contact me on  
[hwhite@wfs.worcs.sch.uk](mailto:hwhite@wfs.worcs.sch.uk)



Lauren Gillam - Early Years Family Support - Mon, Tues,  
Wed, Fri

I will be available at the early year's hub in the morning  
and afternoon for parents to speak to me about any  
concerns.  
[lgillam@wfs.worcs.sch.uk](mailto:lgillam@wfs.worcs.sch.uk)



Wyre Forest School's families and safeguarding team  
is committed to supporting our families in the best  
way we can. Please find contact details above for  
ANY concerns or worries for your child or your  
family.

We can support any worries or concerns around  
SEND, safeguarding, behaviour, mental health,  
relationships, housing, finances, transport and much  
more.



# **PARENT POP-IN WFS PARENTS & CARERS**

**EVERY MONDAY  
FROM 2PM IN OUR  
FAMILY HUB**



**COME ALONG TO ACCESS  
SUPPORT AROUND SEND,  
FINANCES, BEHAVIOUR, SLEEP,  
HOUSING, TRANSPORT AND  
MUCH MORE!**

**THE SUPPORTING FAMILIES TEAM CAN NOW BE  
CONTACTED VIA EMAIL AT  
[SUPPORTINGFAMILIES@WFS.WORCS.SCH.UK](mailto:SUPPORTINGFAMILIES@WFS.WORCS.SCH.UK)**

*Wyre Forest School*

DONATIONS  
WELCOME

# Uniform Swap Shop!

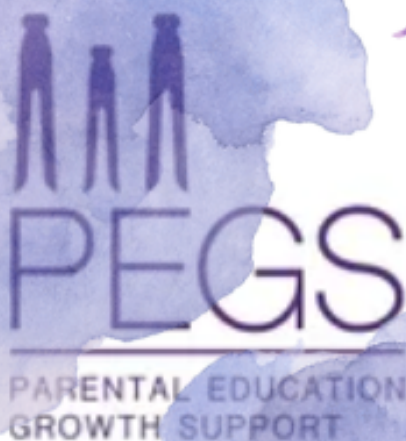
The swap shop will be available at the start and end of the school day (weather permitting) outside the new playground equipment.



Absolutely anyone is welcome to use and donate preloved uniform. Please help us to continue to help as many families as possible by donating the uniform your child has outgrown. Why throw your uniform away if it is in a good condition?

**If your child comes on transport and you would like to access the scheme please contact the supporting families team @ [supporting\\_families@wfs.worcs.sch.uk](mailto:supporting_families@wfs.worcs.sch.uk)**





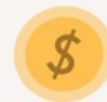
Child to Parent Abuse:  
Supporting parents and  
professionals.

PEGS aims to reduce the  
impact of CPA by helping  
parents, training frontline  
professionals, impacting  
policy and raising  
awareness.

[WWW.PEGSUPPORT.CO.UK](http://WWW.PEGSUPPORT.CO.UK)



# BBC CHILDREN IN NEED EMERGENCY ESSENTIALS



BBC Children in Need Emergency Essentials Programme supports children and young people who are facing exceptionally difficult circumstances, and is delivered by Family Fund Business Services. The programme provides items that meet a child's most basic needs such as a bed to sleep in, a cooker to provide a hot meal and other items or services critical to a child's wellbeing. All applications must be made by a registered referrer.

**Referrals can be made through school. See the Supporting Families Team for more information.**



# SEND Local Offer

Information and advice for families with children and young people with SEN and/or disabilities.



Our SEND Local Offer provides information about provision families can expect to be available across education, health and social care for children and young people who have a Special Educational Need (SEN) or are disabled, including those who do not have Education, Health and Care (EHC) plans. You can find out about resources, services, support, activities and events here.



## SEND Local Offer | Worcestershire County Council

Information and advice for families with children and young people with SEN and/or disabilities.

 [worcestershire.gov.uk](https://www.worcestershire.gov.uk)





# Starting Well Family Hubs Timetable

Spring 2024	Monday		Tuesday
<b>Brookside Family Hub</b> Borrington Rd, Kidderminster, WORCS, DY10 3ED	<b>Well Child Clinic</b> Please call to book.		<b>Midwife Clinic</b> Appointments
	<b>Stay, Weigh &amp; Play</b> 0-5 years 9:30am-11am	<b>Understanding your Child: Additional Needs</b> Group for parents 5:00pm—7:00pm 15/1—18/3	<b>Breast Buddies</b> <b>Peer Support group</b> 10:00-11:30am
<b>Half Crown Wood Family Hub</b> Princess Way, Stourport-on-Severn, WORCS, DY13 0EL	<b>Speech &amp; Language</b> Appointments 9am-3pm Drop in to a <b>Talking Walk-In sessions</b> <b>2nd Monday of the month</b> 11:30am-12:30pm		<b>Birth &amp; Beyond</b> preparation for parenthood 4:00-6:00pm (running in February)
	<b>Midwife Clinic</b> Appointments		
<b>Community Groups &amp; Activities</b>	<b>Understanding your Child: Additional Needs</b> Group for parents Bewdley Primary School, Stourport Rd, Bewdley DY12 1BL 09:00am—11:00am 15/1—18/3	<b>Stay, Weigh &amp; Play</b> 0-5 years 1:00pm-2:30pm Rainbows Day Nursery, Stoney Lane, Kidderminster, DY10 2LX	<b>Understanding your Teen:</b> group for parents Kidderminster Health Centre, Bromsgrove St, Kidderminster DY10 1PG 12:15-2:15pm 16/1—19/3

# Starting Well Family Hubs Timetable

Wednesday		Thursday		Friday
Midwife Clinic Appointments		Midwife Clinic Appointments		Speech & Language Appointments 9am –3pm
Birth & Beyond preparation for parenthood 9:30-11:30am (running January and March)	HENRY: Right from the Start (0-5 yrs) group for parents  FREE Creche places available 12:15-2:45pm 17/1—20/3	Time for Baby stay & play  Non-movers 10-11am	Little Bee's SEN stay & play —  stay & play for children aged 0 to 5 years with additional needs  1:30-2:30pm	Understanding your Baby group for parents with babies aged 0-6mths  *baby massage*  10am-12pm 19/1—15/3
	SEN Peer Support group for Parents/carers  10/01, 24/01, 14/02, 28/02, 13/03, 27/03 9:30-11:00am			
Well Child Clinic 9:00am-11:30am  Call to book		Midwife Clinic Appointments	Stay, Weigh & Play  0-5 years 1:00-2:30pm	Meet the Midwife Opal Team  First Friday of each month
		Understanding Your Child: group for parents 10:00am-12:00pm 18/1—21/3		
You can book on to many of our groups using the QR code and link below:		CHAT HEALTH  IF YOU'RE AGED 11-19 YEARS YOU CAN TEXT THE NUMBER BELOW TO SPEAK TO A SCHOOL HEALTH NURSE FOR CONFIDENTIAL ADVICE AND SUPPORT ON A RANGE OF HEALTH AND WELLBEING ISSUES  text: 07507331750		Find us on Facebook...  Starting Well Partnership Wyre Forest
  <a href="https://www.trybooking.com/uk/eventlist/startingwellwyreforest">https://www.trybooking.com/uk/eventlist/startingwellwyreforest</a>				 SCAN ME



# Starting Well Family Hubs

## Starting Well Partnership Wyre Forest



### Volunteering

Could you be a volunteer?  
We have lots of volunteer opportunities throughout our team including Start for Life Peer Support, self-weigh clinics, promoting our services and much more!  
Contact us for more information.



### HENRY workshops

Join our HENRY workshops:



- Fussy Eaters
- Eating Well for Less
- Understanding Children's Behaviour
- Looking After Ourselves

You can book using the link and QR code:



### Well Child clinics and Self-weigh

Well Child Clinics run on:

- Mondays from 9:30-2:30 at Brookside Family Hub.
- Wednesday from 9:30-11:30 at Half Crown Wood Family Hub.

Self-weigh clinics run on:

- Mondays from 9:30-11 at Brookside Family Hub.
- Thursdays from 1-2:30 at Half Crown Wood Family Hub.

Please call to book.

### Healthy Start vitamins

**Get your free Healthy Start vitamins here**

Use your Healthy Start prepaid card to collect:  
Healthy Start vitamins  
Vitamin drops for babies and young children suitable from birth to 4 years old

[www.healthystart.nhs.uk](http://www.healthystart.nhs.uk)  
@NHSHealthyStart

The prepaid card is issued by Alpha Ltd pursuant to licence by Mastercard International Incorporated. Issued by the Financial Conduct Authority (FCA 500520) for the receipt of electronic money. Head Office: 100 Broad Street, Birmingham Business Park, Birmingham, B1 2JE. Company No: 02031951. Mastercard is a Mastercard International Incorporated.

Apply here →



# Starting Well Family Hubs



Starting Well Wyre Forest  
EVERY CONTACT SHAPES A LIFE

## Starting Well Wyre Forest Parenting and Community team

Groups for parents and carers  
Jan - April 2024



For more information, or to book your place please  
contact us....

Phone: 01905 520032

Email: [admin.wyreforest@barnardos.org.uk](mailto:admin.wyreforest@barnardos.org.uk)

Brookside Family Hub, Borrington Rd, Kidderminster  
DY10 3ED

Phone: 01562 827207

Half Crown Wood Family Hub, Princess Way, Stourport,  
DY13 0EL

Phone: 01299 877920

Provided by:



In partnership with:



Find us on Facebook...Starting Well Partnership Wyre Forest



SCAN ME





WHAT'S ON  
JAN - FEB - MAR



CLUBS AND  
CLASSES



COMPETITIONS!



**KIDDERMINSTER & STOURBRIDGE**

WEST MIDLAND  
**SAFARI  
& LEISURE  
PARK**

**SAVE 30%  
ONLINE  
WMSP.CO.UK**



**MAGAZINE & WEBSITE**

**THE GO-TO GUIDE FOR YOU AND YOUR CHILD**

**raring2go.co.uk**

**WINTER 2024**

**CLICK HERE TO FIND OUT MORE**





Families in Partnership is a collective of parent carers of children with a wide range of special educational needs and disabilities. Our aim is to make sure that parents' voices are heard when it comes to planning and decision making about services for our SEND children and young people in Worcestershire.

By creating a safe and protective environment for parent carers to share their experiences, the forum can help to enable change or improvements when needed and promote those areas of services when they are working well, through positive dialogue and co-production.

[CLICK HERE  
TO FIND OUT MORE](#)

# SOCIAL MEDIA SUPERSTARS



click the links for access to the pages



[@theabilitiesinmefoundation](https://www.instagram.com/theabilitiesinmefoundation)



[@theabilitiesinmefoundation](https://www.facebook.com/theabilitiesinmefoundation)



[@abilitiesinme](https://www.youtube.com/channel/UC...)



[@kidderminsterlibrary](https://www.instagram.com/kidderminsterlibrary)



[@kidderminsterlibrary](https://www.facebook.com/kidderminsterlibrary)



[@family\\_action](https://www.instagram.com/family_action)



[@familyaction](https://www.facebook.com/familyaction)



[@family\\_action](https://twitter.com/family_action)



[@familyaction5386](https://www.youtube.com/channel/UC...)



[@mencap](https://www.instagram.com/mencap)



[@mencap](https://www.facebook.com/mencap)



[@mencap](https://twitter.com/mencap)



[@mencap\\_charity](https://www.youtube.com/channel/UC...)

Signing up to newsletters is  
another great way to keep  
updated with news, events and  
training opportunities!