

FAQ's

What accreditation routes are available?

Accreditation routes are based on the prior level of attainment of each individual student. All our life skills qualifications are unit based, allowing us the opportunity to build a rich and personalised learning programme.

How long do students stay in sixth form?

We have limited numbers of places in our popular sixth form. Therefore, placement lengths are considered on an individual basis. Students may acquire the skills that they need in a relatively short amount of time and be ready to leave us after one year. Other students will benefit from staying with us for two or three years. This decision will be agreed by staff, students and parents with support from the Careers and Transition advisor

Do students wear uniform?

No. Sixth form students are not required to wear school uniform. Suitable clothing for a school and community environment should be selected, avoiding offensive slogans, revealing clothing or high heels.

What happens at the end of Sixth Form?

Students will be ready to move to their next destination which could be college, employment, supported living, training or social provision.

Key Staff

Rebekah Thompson	Assistant Headteacher/phase leader
Emma Darby	Teacher
Tammy Gharu	Teacher
Kate Sheridan	Teacher
Lorna Harrington	Teaching Assistant
Sue Johal	Teaching Assistant
Jo Knight	Teaching Assistant
Zena Gavin	Teaching Assistant
Jonathan Mayall	Teaching Assistant
Kiah Smith	Teaching Assistant
Tom George	Careers & Transition advisor

Parent Partnership

Individual Provision Plans

Staff will work collaboratively with parents and students in setting the IPP targets. Parents will be invited into school termly to discuss and review the IPP.

Support from Home

We will keep parents informed of progress made in school and ask for help with supporting these skills at home.

Financial contribution

We ask parents to provide their child with a few pounds every week towards the cost of cooking skills and activities in the community. This helps us to teach invaluable money-handling life skills.

Coffee Mornings

We hold termly coffee mornings where parents can chat to one another and discuss progress with staff. We often have visitors from colleges or adult providers to help with any transition questions. We welcome feedback and view this as a great opportunity to share ideas.

Please see weekly newsletter for dates

September 2018
February 2019
June 2019



Wyre Forest School Sixth Form



OUR VISION:

All students will leave WFS fully prepared to achieve their potential in the next steps towards adult life.



Learning for Living

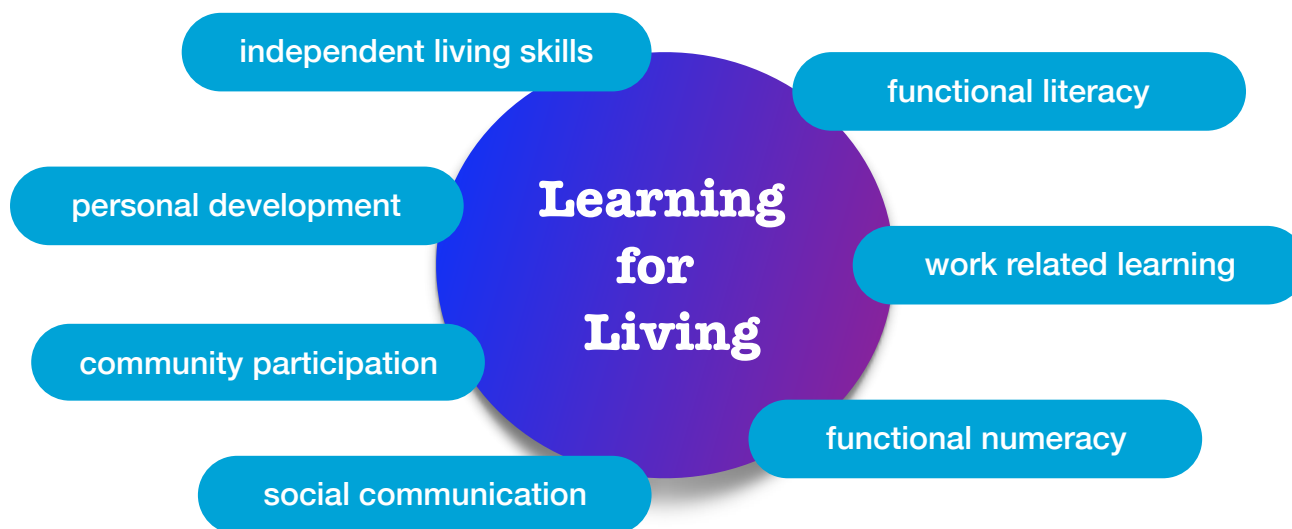
Life in Sixth Form is different to the rest of WFS. Our young people are becoming adults. We aim to nurture the skills needed to take the next step into life beyond school. It is an exciting time, but can be a daunting time.

Our goal is to prepare students with skills, experiences and confidence for successful transition to their next destination.

Learning for Living Curriculum

Our curriculum will:

- ***be individualised***
- ***develop independence***
- ***support transition***



IPP

At the centre of our curriculum lies the Individual Provision Plan (IPP). This will identify targets for development based upon the needs, aspirations and strengths of each student.

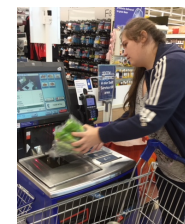
Learning activities will be accredited through **Certificate of Personal Effectiveness, OCR Life and Living Skills or ASDAN Life Skills Challenge.**

Where appropriate to the ability and aspirations of the student, opportunities for further accreditation will be available. For example Level 1 Functional English and Maths or Level 1 Food Hygiene Certificate.

Learning Opportunities

All learning will be embedded in the planned activities and experiences we offer inside and outside of school. No two days will look the same. We have a range of opportunities tailored to the needs of each student including:

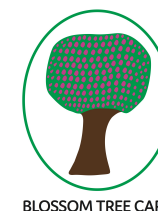
- **WFS allotment at Bishop's Wood**
- **Work experience & work awareness**
- **Young Enterprise**
- **Accessing community facilities**
- **Taking part in leisure and enrichment activities**
- **Using public transport**
- **Working at the community café**
- **Visits to college and further destinations**



The Blossom Tree Cafe

We are proud to offer our students the fabulous opportunity to work in our award-winning café. The Blossom Tree serves the local community in Springfield Park for 3 sessions per week. Our students develop and apply many skills in a practical, real-life situation. These include money handling, time-keeping, health and safety, work skills, communication and social skills, to name but a few.

We hope you will come along for a cuppa and a snack!



BLOSSOM TREE CAFE