

SUPPORTING FAMILIES

NEWSLETTER



Hello there!

Alison Hopkins, Deputy Head at
Wyre Forest School.

As part of the safeguarding team,
my role is to ensure that all our
pupils are safe and that families
are well supported

If you have any concerns about
keeping your child safe, your child's
attendance or would like some
advice or support regarding an
issue at home please contact me at
ahopkins@wfs.worcs.sch.uk

Family Front
Door

01905 822666

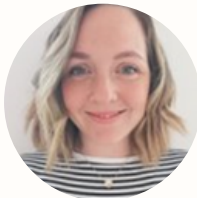
Dial this number if
you are concerned
that a child is at
risk of **SERIOUS
HARM**

Supporting Families Team



Donna Lester - Senior Family Support Worker -
All year round

I am situated at the front gate at the start and end of
each school day, please come and speak to me about any
concerns. Alternatively, email me on
dml3l@wfs.worcs.sch.uk



Lauren Gillam - Designated Teacher for Looked-After
Children, Attendance Lead, Early Years Family Support -
Mon, Tues, Wed, Fri

I will be available at the Orchard Gates in the morning and
afternoon for parents / carers to speak to me about any
concerns. Alternatively, email me on
lgillam@wfs.worcs.sch.uk



Wyre Forest School's families and safeguarding team
is committed to supporting our families in the best
way we can. Please find contact details above for
ANY concerns or worries for your child or your
family.

We can support any worries or concerns around
SEND, safeguarding, behaviour, mental health,
relationships, housing, finances, transport and much
more.



PARENT POP-IN WFS PARENTS & CARERS

**EVERY MONDAY
FROM 2PM IN OUR
FAMILY HUB**



**COME ALONG TO ACCESS
SUPPORT AROUND SEND,
FINANCES, BEHAVIOUR, SLEEP,
HOUSING, TRANSPORT AND
MUCH MORE!**

**THE SUPPORTING FAMILIES TEAM CAN NOW BE
CONTACTED VIA EMAIL AT
SUPPORTINGFAMILIES@WFS.WORCS.SCH.UK**

Wyre Forest School

DONATIONS
WELCOME

Uniform Swap Shop!

The swap shop will be available at the start and end of the school day (weather permitting) outside the new playground equipment.



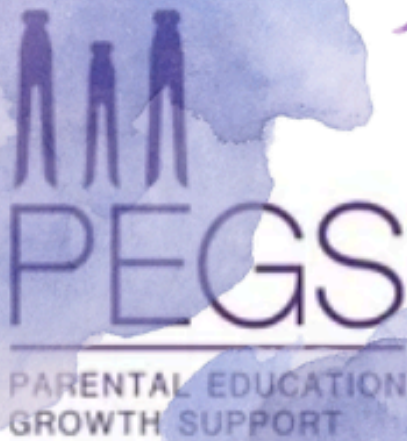
SUMMER ITEMS
AVAILABLE!

Absolutely anyone is welcome to use and donate preloved uniform. Please help us to continue to help as many families as possible by donating the uniform your child has outgrown. Why throw your uniform away if it is in a good condition?

If your child comes on transport and you would like to access the scheme please contact the supporting families team @ supporting_families@wfs.worcs.sch.uk

**WE HAVE LOTS
MORE IN
STOCK!**

If you don't see what you are after on the rail, speak to a member of the Supporting Families Team and we can check to see if we have what you require!



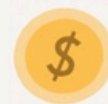
Child to Parent Abuse:
Supporting parents and
professionals.

PEGS aims to reduce the
impact of CPA by helping
parents, training frontline
professionals, impacting
policy and raising
awareness.

WWW.PEGSUPPORT.CO.UK



BBC CHILDREN IN NEED EMERGENCY ESSENTIALS



BBC Children in Need Emergency Essentials Programme supports children and young people who are facing exceptionally difficult circumstances, and is delivered by Family Fund Business Services. The programme provides items that meet a child's most basic needs such as a bed to sleep in, a cooker to provide a hot meal and other items or services critical to a child's wellbeing. All applications must be made by a registered referrer.

Referrals can be made through school. See the Supporting Families Team for more information.



SEND Local Offer

Information and advice for families with children and young people with SEN and/or disabilities.



Our SEND Local Offer provides information about provision families can expect to be available across education, health and social care for children and young people who have a Special Educational Need (SEN) or are disabled, including those who do not have Education, Health and Care (EHC) plans. You can find out about resources, services, support, activities and events here.


<https://www.worcestershire.gov.uk/council-services/childrens-services/send-local-offer>



Starting Well Family Hubs Timetable

Summer 2024	Monday	Tuesday
Brookside Family Hub Borrington Rd, Kidderminster, WORCS, DY10 3ED	Well Child Clinic 11am—3pm Please call to book.	Midwife Clinic Appointments
	Stay, Weigh & Play 0 - 5 years 9:30 - 11am	Breast Buddies Peer Support group 10 - 11:30am
	Understanding your Teen Group for parents 5 - 7pm 22/4 - 01/7	Birth & Beyond Preparation for parenthood 4 - 6pm (running in April and June)
Half Crown Wood Family Hub Princess Way, Stourport-on-Severn, WORCS, DY13 0EL	Speech & Language Appointments 9am - 3pm Drop in to a Talking Walk-in session 2nd Monday of the month 11:30am - 12:30pm	Midwife Clinic Appointments
Community Groups & Activities	Understanding your Child with Additional Needs Group for parents St Mary's C of E School, Stoney Ln, Kidderminster DY10 2LX 1 - 3pm 22/4 - 08/7	Understanding your Child with Additional Needs Group for parents Kidderminster Health Centre, Bromsgrove St, Kidderminster DY10 1PG 12 - 2pm 23/4 - 09/7

Starting Well Family Hubs Timetable

Wednesday		Thursday	Friday
Midwife Clinic Appointments		Midwife Clinic Appointments	Speech & Language Appointments 9am – 3pm
Birth & Beyond Preparation for parenthood 9:30 - 11:30am (running in May and July)		Time for Baby stay & play <i>Non-movers</i> 10 - 11am Term time only	Understanding your Baby Group for parents with babies aged 0-6mths 10am - 12pm 21/6 - 16/8
SEN Peer Support group Parents/carers 08/05, 22/05, 12/06, 26/06 9:30 - 11am	Time for Me For Parents/carers 24/04, 15/05, 05/06, 19/06 12 - 1pm		
Well Child Clinic 9 - 11:30am 2nd and 4th Wednesday of the month Please call to book		Understanding Your Child: Group for parents 10am - 12pm 25/4 - 4/7	Meet the Midwife Opal Team <i>First Friday of each month</i> Understanding your Baby Group for parents with babies aged 0-6mths *12pm - 2pm 12/4 - 07/06
Understanding your Teen: Group for parents The Stourport High School and Sixth Form Centre, Minster Rd, Stourport-on-Severn DY13 8AX 11am - 1pm 24/4 - 10/7		Kinship carers group Half Crown Wood Family Hub Second Friday of each month 9:30am - 11:30am	
		You can book on to many of our groups using the QR code and link below:  https://www.trybooking.com/uk/eventlist/startingwellpartnership	
		Find us on Facebook... Starting Well Partnership Wyre Forest   SCAN ME	

Starting Well Family Hubs

Starting Well Partnership Wyre Forest



Volunteering

Could you be a volunteer?
We have lots of volunteer opportunities throughout our team including stay, weigh and play, peer support, administration support our services and much more!
Contact us for more information.



One-off workshops

Join our one-off workshops:

- Fussy Eating
- Understanding your Teen
- Understanding your Children's Behaviour
- Sleep

You can book using the link and QR code:

<https://www.trybooking.com/uk/eventlist/startingwellpartnership>



Well Child clinics and Childcare Funding

Well Child Clinics run on:

- Mondays from 11-3 at Brookside Family Hub.
- 1st and 3rd Tuesdays from 9:30-11:30 at Kidderminster Health Centre.
- 2nd & 4th Wednesdays of the month from 9:30-11:30 at Half Crown Wood Family Hub.

Please call to book.

Support with accessing funding for childcare:

We can help you to apply for nursery and childcare funding, please call: 07738 860812

Healthy Start vitamins



Are you pregnant or have children under the age of 4?

You could get help to buy:

Plain cow's milk
Fresh, frozen or tinned fruit and vegetables
Fresh, dried, and tinned pulses
Infant formula milk

You can also get free Healthy Start vitamins.

www.healthystart.nhs.uk
@NHSHealthyStart



Apply here →

Starting Well Family Hubs



Starting Well Wyre Forest
01905 520032 & 01299 877920

Starting Well Wyre Forest Parenting and Community team

Groups for parents and carers
April - July 2024



For more information, or to book your place please
contact us....

Phone: 01905 520032

Email: admin.wyreforest@barnardos.org.uk

Brookside Family Hub, Borrington Rd, Kidderminster
DY10 3ED

Phone: 01562 827207

Half Crown Wood Family Hub, Princess Way, Stourport,
DY13 0EL

Phone: 01299 877920

Provided by:


Herefordshire and Worcestershire
Health and Care
NHS.uk

In partnership with:


BARNARDOS

Supporting children,
strengthening families


Sure Start
Children's Centres
Worcestershire

Delivered on behalf of

worcestershire
county council



Find us on Facebook...Starting Well Partnership Wyre Forest

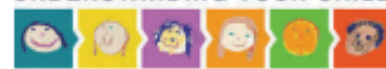


SCAN ME



Starting Well Partnership
EVERY CONTACT SHAPES A LIFE

UNDERSTANDING YOUR CHILD



SOLIHULL APPROACH

Understanding your Child's Behaviour Workshop

Do you have a child aged 2 - 10 years?

FREE One-off sessions available to parents & carers

**1 x 2 hour session on Microsoft Teams -
Digital session (Book for one of the workshops below)**

Thursday 23rd May 9.30 - 11.30am

Monday 17th June 6 - 8pm

Tuesday 2nd July 12.30 - 2.30pm

**These workshops run across the county.
Book by scanning the QR code to visit
[www.trybooking.com/uk/eventlist/
startingwellpartnership](http://www.trybooking.com/uk/eventlist/startingwellpartnership)**



Provided by:



In partnership with:



EVERY CONTACT SHAPES A LIFE

Delivered on behalf of
worcestershire
county council

ARE YOU EXPERIENCING FINANCIAL DIFFICULTIES?

We Can Help!

- FOOD BANK VOUCHERS
- SIGNPOSTING TO FINANCIAL INCLUSION OFFICER
- ACCESS TO SECOND HAND UNIFORM
- REFERRALS FOR EMERGENCY ESSENTIALS
- A LISTENING ear



Contact Us

supportingfamilies@wfs.worcs.sch.uk

Speak with our Family Support Workers Donna or Lauren, we are available daily at the school gates.





Families in Partnership is a collective of parent carers of children with a wide range of special educational needs and disabilities. Our aim is to make sure that parents' voices are heard when it comes to planning and decision making about services for our SEND children and young people in Worcestershire.

By creating a safe and protective environment for parent carers to share their experiences, the forum can help to enable change or improvements when needed and promote those areas of services when they are working well, through positive dialogue and co-production.

**[CLICK HERE
TO FIND OUT MORE](#)**

DOMESTIC ABUSE SUPPORT

If you are a victim of domestic abuse and violence, or know someone who is, there is help available.

How to get help

- Abuse helpline on 0800 980 3331 is available 24 hours a day, 365 days a year and is staffed by trained workers who can offer you support, safety planning, information and advice
- Male Domestic Abuse Helpline on 0800 014 9082, free and confidential, available 24 hours a day

In an emergency always dial 999 and ask for police. If you are not safe to speak – call 999 and then press 55.

Guidance on the silent calls ("Silent solution")

For general domestic abuse support and guidance visit

<https://www.worcestershire.gov.uk/council-services/adult-social-care/safeguarding-and-concerns-about-adult/domestic-abuse-support>



Intro to Autism

Join us for our Intro to Autism sessions.
A two part course with our autism
specialist teacher Sue Jones.

**18th June & 2nd
July**

**1.30 - 2.30
@ Russell House**

RSVP to supportingfamilies@wfs.worcs.sch.uk



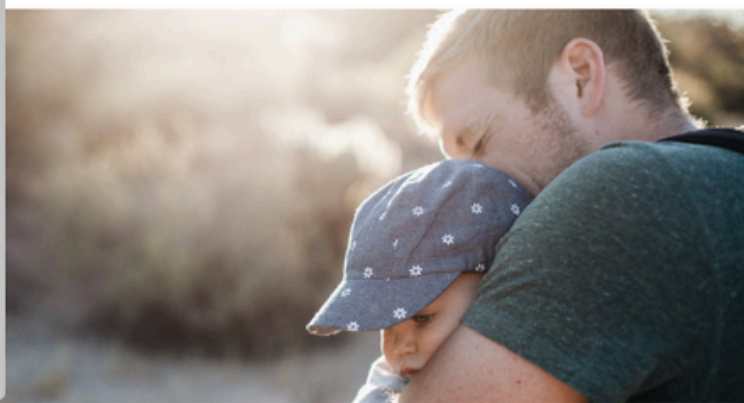
WORCESTERSHIRE VIRTUAL FAMILY HUB



Virtual Family Hub

We have developed this virtual family hub to give you a range of different types of resources to help to support you and your family.

WORCESTERSHIRE
CHILDREN FIRST 



[HTTPS://WWW.WORCESTERSHIRE.GOV.UK/COUNCIL-SERVICES/CHILDRENS-SERVICES/VIRTUAL-FAMILY-HUB](https://www.worcestershire.gov.uk/council-services/childrens-services/virtual-family-hub)





The Challenging
Behaviour Foundation

Family Carers' Email Network

The CBF Family Carers' Email Network enables you to be in touch with a number of families around the UK. You can share experiences, information and receive support – without any obligation to reply or to identify yourself.

Who it's for

This network is specifically for family carers of children and adults with severe learning disabilities who display behaviour described as challenging.

Individuals with severe learning disabilities typically:

- have very limited or no verbal communication
- have great difficulty in learning new skills
- have great difficulty in completing everyday tasks such as washing, dressing, eating and keeping safe
- need life-long support



click the links for access to the pages

@abilitiesinme

@kidderminsterlibrary.

@family_action

[@familyaction5386](#)

@mencap

@mencap_charity.

Signing up to newsletters is another great way to keep updated with news, events and training opportunities!