

Newsletter Friday 6th December 2024

www.wfs.worcs.sch.uk

office@wfs.worcs.sch.uk

Information for Parents



Not many sleeps to go now to the big day!

I hope to see lots of you tomorrow at the Christmas Fair and I know that Father Christmas is definitely paying us a visit because he's heard what amazing children we have at WFS.

See you tomorrow!



Wyre Forest Christmas Fair
Winter Wonderland Themed Grotto
Saturday, 7th December
11:30am - 2:30pm

Santa
Donkeys
Tombola
Stalls
Food and Hot Beverages
Gift Shop
Choir

Raffle - Main Prize: 4x Tickets to West Midlands Safari Park Santa Experience
And many more!

The Grinch
1pm-1:30pm

The poster features a festive background with snowflakes and Christmas ornaments. The text is arranged in a central column with event details, and side text lists activities. A raffle section is also included.

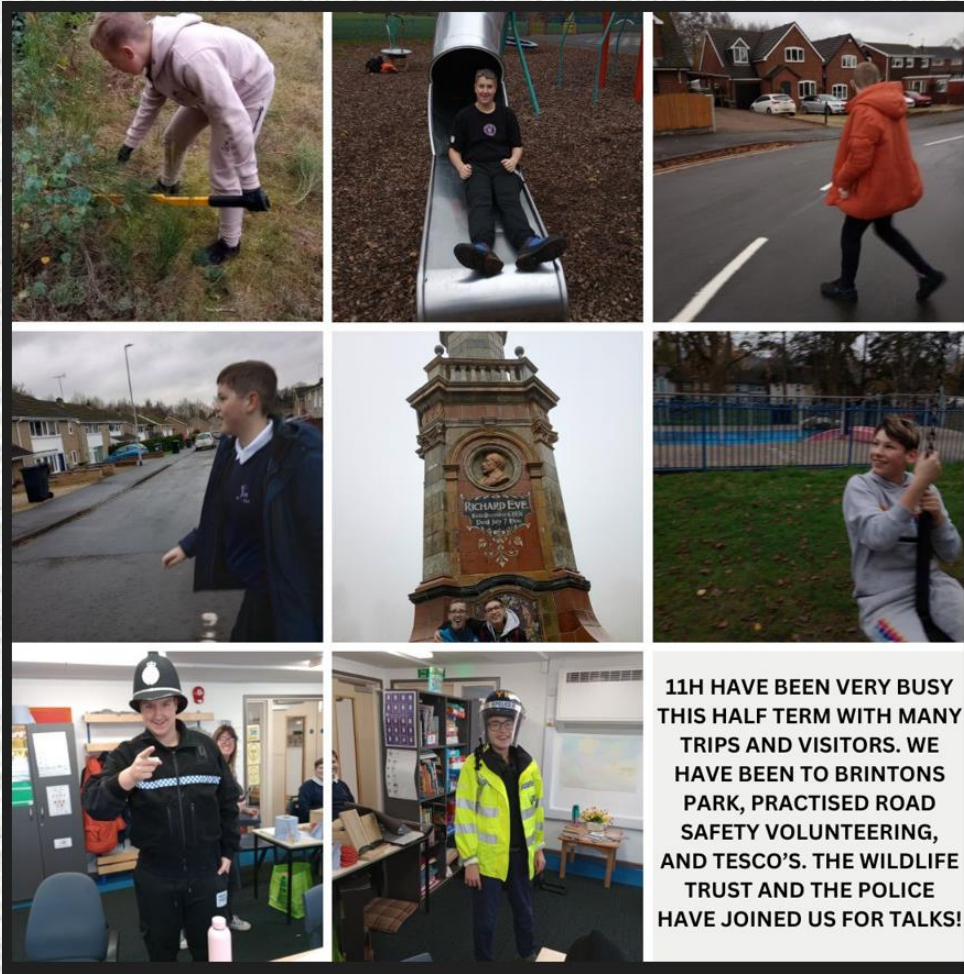
Pathway 4 News

Pathway 4 had a visit from Ann at HSBC this week. Some of us have met Ann before, some of us haven't. Ann talked to us about banking and how to open up our own bank accounts, banking and debit card safety, the features of a debit card and different forms of payment such as gift cards. We found out that some of pathway 4 already have their own bank accounts, such a Go Henry accounts and Lloyds bank accounts.



Eligible parents/carers will receive their free school meal vouchers on Wednesday 18th December, they have a validity of one month.

11H News



PARENT POP-IN
WFS PARENTS & CARERS

EVERY MONDAY
FROM 2PM IN OUR FAMILY HUB

COME ALONG TO ACCESS SUPPORT AROUND SEND, FINANCES, BEHAVIOUR, SLEEP, HOUSING, TRANSPORT AND MUCH MORE!

THE SUPPORTING FAMILIES TEAM CAN NOW BE CONTACTED VIA EMAIL AT SUPPORTINGFAMILIES@WFS.WORCS.SCH.UK



We would be very grateful for any empty chocolate/sweetie tubs.

You are welcome to bring them to the school office.

Thank you.



Supporting your Autistic Teen

Online webinar focused on exploring ways to support your autistic teen

Open to parents/carers in Herefordshire & Worcestershire

Join us for an in-depth training session focusing on supporting your autistic teen. During this webinar, we will cover:

Transitions
Sensory differences
Autistic burnout
Navigating social relationships
Self-identity.

**Wednesday 11th
December
10am - 12pm**



Can't attend live? Catch up with a recording available for 2 weeks after the event



UNIVERSITY *of* WORCESTER

My name is Rosie Tyerman and I am a third-year BSc (Hons) Physiotherapy student at the University of Worcester. I am currently conducting a dissertation study titled:

Parents' and teachers' perspectives of hydrotherapy and its benefits for children attending special educational needs schools

The aim of this survey is to discover the impacts of hydrotherapy for children aged 4-18years and attending SEN schools from the perspectives of parents and teachers. It will also delve into any barriers or facilitators surrounding hydrotherapy for this population.

Participation in this study involves a short survey that should take no longer than 15 minutes.

If you are interested in taking part, use the QR code below to access the survey. Further participant information and consent information can be found at the start of the survey.



Thank you for your time!



11P have been very busy this term.

We took part in the Remembrance Service at school and joined Wyre Forest Police for their two-minute silence. A visit to Nova college, Jess spoke about the courses they offer and talked about the choices available post 16.

We had a visit from Wyre Forest police to talk about staying safe online and out in the community. We built a snowman with the small amount of snow outside our classroom.

11P are very proud to have chosen Nightstop as a charity in our community that they would like to support. They will be making Christmas pinecone gonks to sell in school and asking for donations on Christmas jumper day. The class agreed that Nightstop do amazing work in the Wyre Forest supporting families and young people. They would all appreciate your support with raising money for such a worthwhile charity. More details to follow.



Christmas Jumper day

13th December 2024

Raising money for Wyre Forest Nightstop



11P have had a visit from the fabulous people at Kidderminster Nightstop.

They were so inspired that they want to raise money for the local charity. They will be selling some rather fabulous pinecone gonks decorations but are also holding a Christmas Jumper Day on Friday 13th December. Please donate £1 or whatever you can afford on the 13th of December and wear your Christmas jumper to school. Pinecone gonks will be on sale during the day, prices starting at £1. Please do support where you can.





Pudsey came to visit us at school!

We raised £370.25 for Children in Need



WHSmith

WHSmith in Kidderminster have very kindly donated lots of lovely stationery, books and art supplies – thank you very much.



10SD

This term pupils in 10SD have been undertaking their first work experience placement in their local community. They have been working at Kidderminster Town Hall polishing silverware.





Communication and Interaction News and Information

This term we are focusing on Language and Play.



This week's focus is:

Co-operative Play.

It is important that children learn to play together. Working together is an important communication skill. Co operative play helps them to wait, share, take turns and learn about rules.



How can you help?

- Have materials available to use both indoors and outdoors
- Model how to turn take
- Model how to share
- Model how to wait
- Model the rules of the game



• Can help to understand frustration • Supports language development • Slows speech down • Can help

Here are some fun ideas to help with developing Co-operative play:

- Building a tower using bricks etc
- Doing a puzzle together
- Playing board games such as pop-up pirate
- Ball games etc
- Working together to make a collage or picture



Free Resource

Signalong Christmas Advent Calendar

Check out the link below to download an advent calendar that has lots of Christmas Signalong signs.

<https://www.shop.signalong.org.uk/>

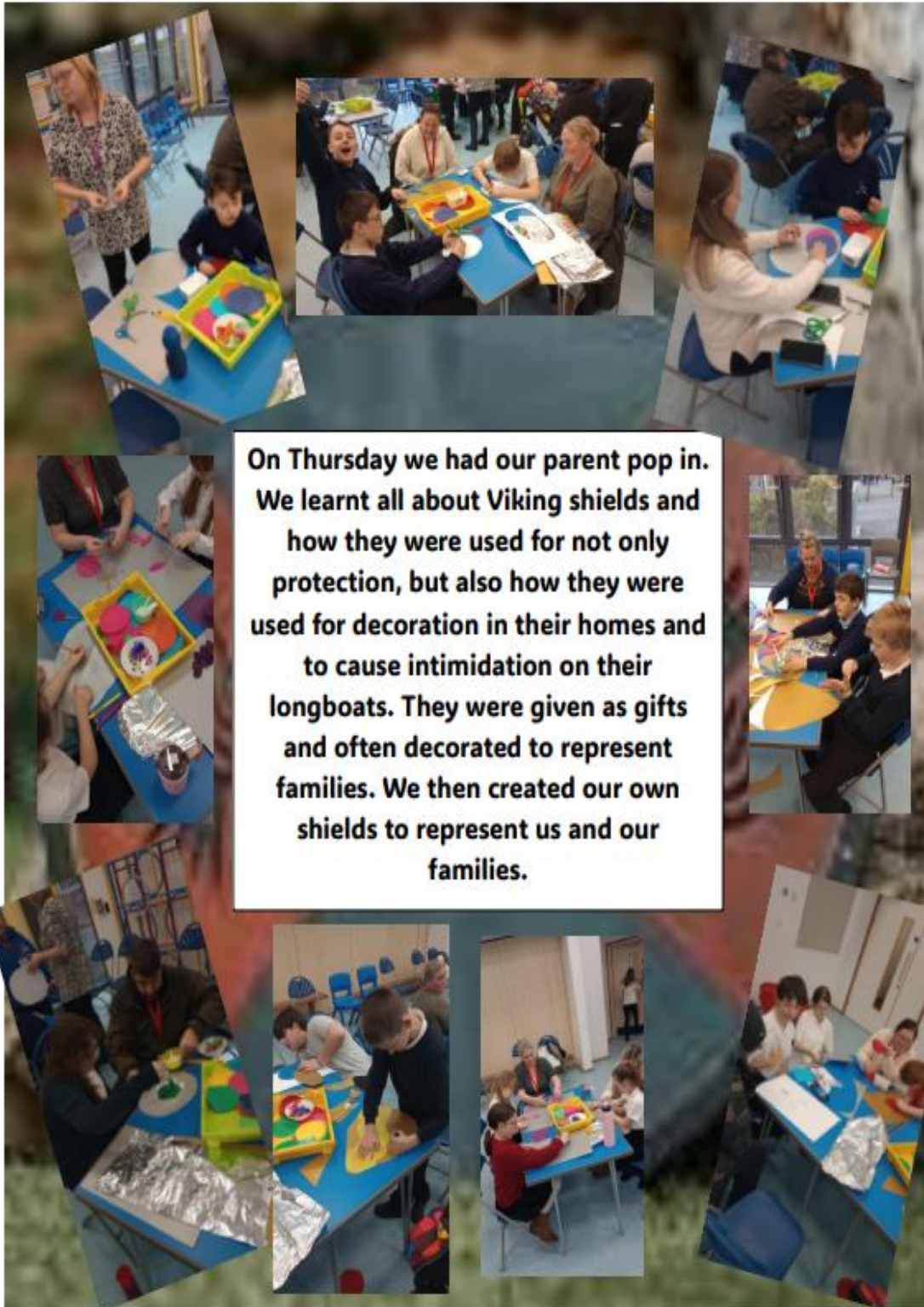


Kind regards
Communication team



06.12.24

Pathway 4 Parent Pop-In



Russell House News

What We Have Been Up To
This Week At
Russell House

	<u>Group 1</u>	<u>Group 2</u>
<u>Monday</u>	Christmas tree decorating	Youth club
<u>Tuesday</u>	Christmas Karaoke	Cooks garden center & Hartlebury common
<u>Wednesday</u>	Webbs garden center	Christmas baking with Ourway
<u>Thursday</u>	Christmas arts and crafts	Christmas light hunting

This week saw the return of the naught elves





DECEMBER 2024	
7	Christmas Fayre – 11.30am – 2.30pm
10	Pathway 1 – Christmas Stay & Play
11	Pathway 2 – Christmas Stay & Play – Parents welcome 10.30 – 11.30 am – ASH, MAPLE, POPLAR, ROWAN, HAWTHORN 1.30 – 2.30 pm – BIRCH, CHESTNUT, WILLOW, HAZEL, CHERRY
12	EYFS Nativity – 1.30pm
13	EYFS Nativity – 9.30am Christmas Jumper Day
18	Pathway 3 Christmas Concert – 1.30pm
20	Last Day of Term

JANUARY 2025	
6	Term starts
21	Parents Puberty & SEND Meeting - 1.30pm
31	EYFS Parent Support Group – Sensory OT session – 1.30pm – 2.30pm at Russell House

FEBRUARY 2025	
3	Children’s Mental Health Week – ‘Know yourself, grow yourself’.
6	EYFS Stay & Play – 1.30pm
11	Safer Internet Day
12	Parents Evening and Life Beyond School
	17th – 21st February – Half Term

MARCH 2025	
7	World Book Day
21	World Down Syndrome Day
28	EYFS Parent Support Group – coffee and catch up -- 1.30pm – 2.30pm at Russell House

APRIL 2025	
1	Pathway 1 Stay & Play – TBC – Parents Welcome
2	Pathway 2 Easter Stay & Play TBC Autism Awareness Day
3	Year 9 DTP Vaccinations Pathway 4 – Parent Pop In
9	Pathway 3 Picnic in the Park
10	EYFS Easter Event – 1.30pm
11	WFS new building 10-year-old party
11	Last Day of Term
EASTER HOLIDAY	
28	Term starts

MAY 2025	
1	Post 16 – Coffee Morning
5	School Closed - May Bank Holiday
8	Post 14 – Afternoon Tea
14	Pathway 4 – World of Work Event
22	EYFS Stay & Play – 1.30pm
23	EYFS Parent Support Group - coffee & catch up– 1.30pm – 2.20pm at Russell House
26th – 30th May – Half Term	

JUNE 2025	
2	Term starts
5	World Environment Day
10	Pathway 1 – Summer Picnic – Parents Welcome
13	Father's Day Carer Gift Shop
19	Year 8 HPV Vaccinations
20	6 th Form Pride Summer Fayre Dress Down Donation Day
27	Leavers Party Make Music Day

JULY 2025	
1	Pathway 2 – Sports
2	Pathway 2 – Sports
3	Parents new to 6 th Form – 9.30am EYFS Sports Day – 1.30pm
4	EYFS Parent Support Group – Pathway Information with Deputy Head & Pathway Leaders – 1.30pm – 2.30pm at Russell House
7	Post 14 & Post 16 - Sports
8	New to Reception Parents Meeting
9	Pathway 2 Celebration Stay & Play
10	Pathway 3 Sports – 9.30am Pathway 1 Sports & Celebration - afternoon
12	Summer Fayre
14	Pathway 1 Sports & Celebration - afternoon
15	Post 14 Class Celebration
16	EYFS Celebration – Morning – TBC Pathway 3 - Awards
17	Pathway 4 – End of Year Awards
18	TERM ENDS

Please note: all the above dates / times are subject to change.

Please can we remind all Parents & Carers to keep the school office updated with any change of details, i.e., telephone numbers, addresses, list of contacts. Thank you.