

# Newsletter Friday 7<sup>th</sup> December 2018

**Menu Week:** Week beginning 10<sup>th</sup> December will be **Week 3**



**Attendance: Whole School Target 2018/19 is 95%**

**Week Ending 30<sup>th</sup> November 2018 – Whole School 92.8%**

Top 3 classes; 1. 13S = 99.1% 2. BEECH = 98% 3. 11B = 97.1%



**A HUGE Thank you from The Friends of Wyre Forest School for the fabulous support for their Christmas Fete!!! It was lovely to see so many parents / carers and friends attend!**



## Class 12K - Level 1 Food Hygiene & Safety Course



Congratulations to the first three members of 12K who have achieved their Food Hygiene & Safety Course! The class group are working with Vestia by accessing their training room at Community Housing Trust in Kidderminster to complete the online training over the next few terms.

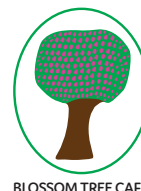
All students in 12K will be completing the training which will support their work at Blossom Tree Cafe in Springfield Park, Kidderminster. Please come and visit us at the café for a lovely hot drink and a delicious slice of cake served by the students.

Our opening times are:

Monday 9.30am – 11.30am

Wednesday 9.30am – 12.00pm

Friday 10.00am – 1.30pm



BLOSSOM TREE CAFE



Class 12K have visited KDYT Youth Club at Kidderminster Youth House this week to enjoy the facilities they have on offer for young people. The group enjoyed looking around the Youth House and meeting the staff there. They played air hockey, PS4, a retro computer table game, sports in the sports hall, participated in arts and crafts and relaxed and chatted with friends. The Youth Club have different activities on offer each week for young people aged 13 – 25.

## Elm Class news

ELM class visited the Wyre Forest and walked 'The Highway Rat' trail where they made links with their topic 'Food glorious food'.



## Special School Nurses Information

There is Special School Nursing Service information attached to the newsletter this week, with regards to how to contact them. Our School Nurses can be contacted via The Princess of Wales Hospital on 01527 488446 if they are not in school on a day you would like to speak to them.



## Lost Property



We have a large amount of unclaimed lost property in school. Items include coats, school uniform, drinks bottles, glasses.

Please claim by Friday 14<sup>th</sup> December, after this date we will be donating all items to a clothes bank. Unfortunately, none of it is named, it would be really helpful if you could write your child's name in every item of clothing they wear in school, thank you.

## 12G Enterprise Lessons

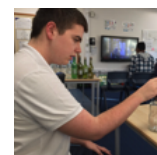
Class 12G have been working hard in their Enterprise lessons making goodies for the Christmas Fete.



## 13S Enterprise Lessons



Class 13S have worked really hard with our Christmas enterprise project. We have been washing bottles and removing labels to decorate them with snowflakes and lights. If you're interested in buying a bottle and couldn't come to the Christmas Fete then please contact Class 13S to put your order in. Bottles are selling at £5 each.



## PINE Class

Children in Pine Class have been exploring different textures and learning signing!



## 8W – WW2 Lesson

Class 8W have been learning about WW2 and have built an air raid shelter in their classroom. They have experienced what it was like during the blitz and how to keep themselves safe during their role play blitz.





## Signalong Freebie!

Hi everyone, check out the website, [www.signalong.org.uk](http://www.signalong.org.uk) The website has a section in it called 'Freebie Friday'. This is where you can download and print free signing resources. The free resource available this time is an 'advent calendar. It has some really good festive signs. Go and have a look!!



Just to say a big thank you to those parents who attended our first workshop on Speech, Language and Communication Needs. It was a real success. Here are a few comments, *"Enjoyed the relaxed atmosphere, could ask anything"* and *"Really helpful and encouraging"*.

Many thanks Beverley (WFS Signalong Tutor)

| DECEMBER |   |
|----------|---|
| 11       | Surprise Gift Shop for students                                       |
| 12       | Kidderminster Male Voice Choir visit - sorry, no parents due to space |
| 13       | Early Years Nativity – <b>Parents here for 2pm please</b>             |
| 14       | Middle & Upper School Christmas Assembly - no parents due to space    |
| 14       | <b>HOLLY Class Assembly – 9am for 'Holly' Parents</b>                 |
| 17       | Russell House Christmas Party 4.30 – 6.00pm                           |
| 18       | CHESTNUT Parents in at 2pm for decoration making and carols!          |
| 19       | 10S Parents in Christmas activities. (1.30pm – 2.30pm)                |
| 19       | 11B Parents in to Class (1.30pm – 2.30pm)                             |
| 20       | Pupil Christmas Dinner  |
| 21       | Christmas Jumper Day in School (If pupils want to wear one)           |
| 21       | <b>Last Day of Term – Pupils will finish at 3pm</b>                   |

**ALL PUPILS RETURN TO SCHOOL AT 8.45am**  
**TUESDAY 8<sup>TH</sup> JANUARY 2019.**



# SPECIAL SCHOOL NURSING SERVICE

## *Newsletter . . .*



Worcestershire  
Health and Care  
NHS Trust

The Special School nursing service in Worcestershire is delivered through Locality bases, one in the North of the county based at Princess of Wales Hospital in Bromsgrove, and one in the South based at Shap drive Children's Development Centre in Worcester.

Each Special School in Worcestershire has a Named Special School Nurse linked to it, but does not have a nurse on site every day. The Special school nursing team work during school hours, term-time only.

The Special school nursing service works with school staff for children that are school aged in Special schools, to ensure children's health needs can be supported when they are in school. All children can have contact with the Special School Nurse if they choose to. This can be alone or with a parent or carer present.

To contact the Special school nursing service you can contact us on the following telephone numbers:

Shap drive 01905 681865 for the South Locality team which includes:

Vale of Evesham School

Fort Royal Community Primary School

Regency High School

Princess of Wales Hospital 01527 488446 for the North Locality team which includes:

Chadsgrove School and Specialist Sports College

Rigby Hall School

Pitcheroak School

Wyre Forest School

Alternatively, you can leave a message in your child's school and we will respond appropriately, or you can email the Special School nursing team during term-time on: [whcnhs.ssn@nhs.net](mailto:whcnhs.ssn@nhs.net)

Special School Nursing is not an emergency service. If your child is ill, please contact your GP or 111. If you have a Community Children's Nurse you may contact them for advice.