

Newsletter Friday 28th November 2025

www.wfs.worcs.sch.uk

office@wfs.worcs.sch.uk

Information for Parents



The children always work incredibly hard at WFS but so do the staff. I am delighted that some of our staff have been recognised by their colleagues and UNISON as 'Stars in their School'.

A massive congratulations to;

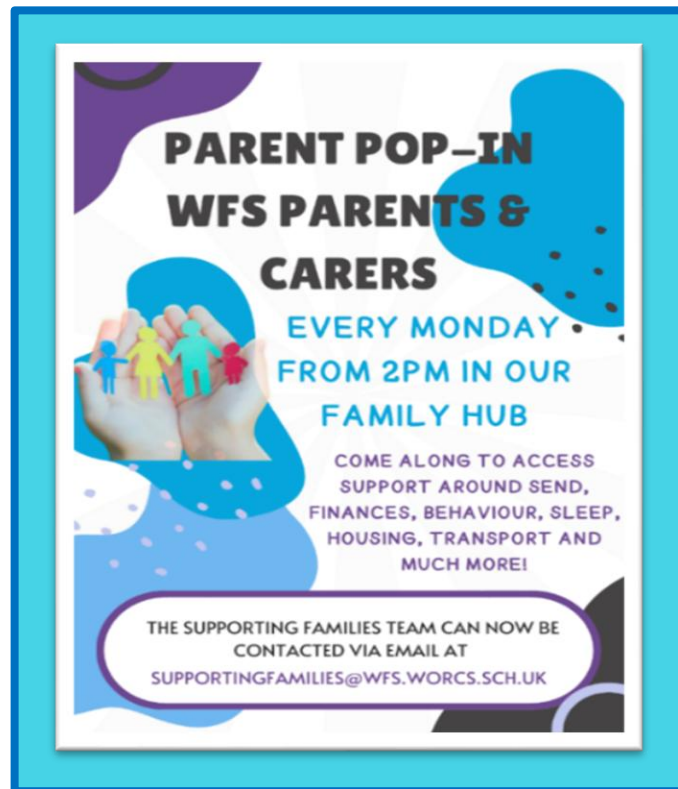
Lynn Hardiman - amazing in the office

Wendy Hill - also amazing in the office

Ken Hutton - our fabulous handyman who can fix and make anything.

Jo Campbell - who works so very hard in the communication team - and makes us laugh in signing training.

Andrew Healy - our first-class personal care assistant



Calendar Dates

Please find information and times of school events at the end of the newsletter.
2026 information to follow.

Please don't forget to pre-book your child's dinner choices for next week through

MyChildAtSchool

We are looking for a Lunchtime Supervisor and a Playworker for one hour a day, to support class team with lunches and play.

For any more information please contact the school office
on 01562 827785

Is my child too ill for school?



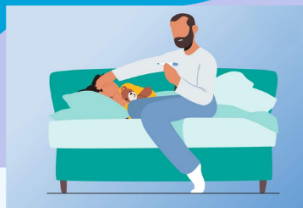
It can be tricky deciding whether or not to keep your child off school when they're unwell.

For guidance on when a child should or should not attend school due to illness, the NHS provides helpful information at:



www.nhs.uk/live-well/is-my-child-too-ill-for-school.

If you do keep your child at home, it's important to phone school on the first day of your child's absence and let us know the reason they are absent.



Government guidelines explain when children need to be kept off school for certain illnesses and when they can return. These rules help protect everyone's health and make sure children don't miss school unnecessarily.





Friends of Wyre Forest School

presents

Christmas Fair

Saturday 13th December
11:30am to 2:30pm

Please join us for craft stalls, children's games, raffle, tombolas, hot food, Santa's Grotto & much more!!

friendsofwyreforestscool@gmail.com

Parentkind
Member Association

Please enjoy articles this week from classes in Pathway 3

Almond Class



This half term Almond Class have been learning about the "Victorians". the children have done lots of different activitites. In cooking they made scones, in PE they tried skipping.. The children have really enjoyed having a go at weaving in art. Well done Almond Class.

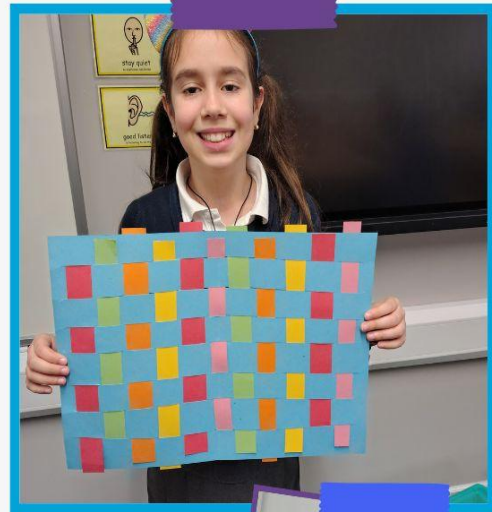
Your paragraph text

Your paragraph text



Juniper Class

This term so far we have been looking at the Victorian era, exploring the clothing, the classrooms, how they live and how that compares to our lives now. Exploring 'Fact Families' in Maths and focusing on our weaving skills.



We have used our culinary skills and created so many delicious dishes this half term from fruit salad, to scones and a delicious vegetable soup.



Oak Class



Oak class have been working really hard this half term. In literacy the pupils have been developing their comprehension and grammatical skills. Some children have been extending word meanings and counting syllables in words.

In maths the pupils have been focusing on addition and subtraction using fact families. Some pupils have used the inverse method to write addition and subtraction number sentences.

Watercolour is the focus in art lessons. The pupils have had great fun blending colours together using different water colour techniques.



Class Newsletter



Spruce Class

What We're Learning



- **Math:** The children have been doing some lovely work measuring capacity and creating instructions to make potions. We have also been practising our number formation.
- **Literacy:** The children have been exploring Tiddler this half term. They have been sequencing the story and building their vocabulary of describing words.
- **World About Us:** We have spent this half term exploring living and not living and categorising creatures, so far we have covered mammals, birds, reptiles and fish.



Olive Class

Autumn 2

We have had a busy half term so far in Olive Class. We have been looking at addition in Maths and what makes a sentence in English as well as reading Oliver's Fruit Salad and the lovely Einstein the Penguin.

In Art we have been looking at weaving and creating natural art. In World About us we have been learning about where our food comes from.

Our highlight has been preparing for our Christmas performance where we will be singing in German! Don't forget our Pathway 3 Performance is the afternoon of Monday 8th Dec.

Monday 15th Dec we will be visiting the church to learn about advent and what Christmas means to Christians.

Photos





Walnut class have had a wonderful half term - We have really enjoyed our topic of Under the Sea and topic book Tiddler focusing on describing the characters. In World about us, we have been learning about the characteristics of mammals, reptiles, birds, fish and insects - we have also used the ipads to create the perfect selfie and made their own photo montages. We have really enjoyed accessing the bike track each week to gain new skills as well as learning lots about capacity in Maths.

Walnut Class

The Limitless Disabled Cycling Hub, For all ages & Abilities.

Is This Sunday the 30th of November , 11 am till 1 pm

We have a wide range of adapted bikes including recumbent trikes, ice trikes, hand cycles, trikes with side supports and sandal pedals, mountain bikes, racing bikes and tandems. All ridden on our traffic free cycling circuit.

It's £5 per rider and one carer can ride for free. Cash only please.



This Sunday 11am till 1pm, at Stourport Sports Club.

Limitless - Wyre Forest Inclusive Cycling

For more info call Paul on 07843020406 / www.wfrcr.org.uk



OPEN DAY

🌿 Tuesday 2nd December 2025

🌿 09:30am - 12:30pm

🌿 Valley Stadium, Bromsgrove Road, Redditch, B97 4RN

We are a post 16 SEN specialist education provider working in partnership with Redditch United FC to offer students the opportunity to enrol in our Sport and Education or Core programmes.



If you would like more information about our provision in Redditch, please scan the QR code to register your interest and arrange a visit.





Communication and Interaction News and Information


Language and Play.

Play is important for developing language and communication skills. One type of play that is essential for this is symbolic play.

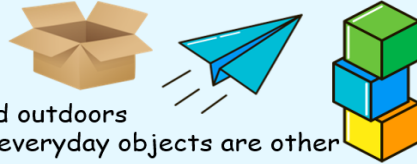


Symbolic Play.

A symbol is something that represents something e.g., the words that we say are symbols and have a meaning attached to them. It is important for children to learn this. As children start to learn about symbols, they will use objects to represent other objects or ideas e.g., using a cardboard box as a house, spaceship or car.

How can you help? 

- Have materials available to use both indoors and outdoors
- Encourage your child to join in pretending that everyday objects are other objects e.g. a brick is a phone
- Play alongside your child and model pretend play with them



Here are some fun ideas to help with developing symbolic play:

- Use bowls and sticks for cooking and ask your child for the cutlery and saucepans
- Have chalk and painting equipment indoors and outdoors
- Have action figures and dolls with different items your child can make houses, food etc
- Have items your child can make a shop and pretend food
- Have items your child can make their own musical instruments



Please make sure these activities are safe for your child

Kind regards
Communication team



Widgit
CENTRE



Accreditation -
Specialist Level

**Speech and
Language UK**



24.11.24

RUSSELL HOUSE

GROUP 1

GROUP 2

MONDAY MERRY HILL BIKE TRACK & PLAYGROUND

TUESDAY FARM SWIMMING

WEDNESDAY OUR WAY - BAKING & SOFT PLAY PARK & SHOPPING

THURSDAY CHRISTMAS TREE SHOPPING & POOL PARK





Wyre Forest School's BBC Children in Need Day 14th November 2025



THANK YOU

We raised a
fantastic- £312.00











**IMPORTANT
DATES**

December 2025	
8	School Photograph Catch up – a.m.
8	Pathway 3 Christmas Scrooge Performance – 1.30 – 2.30pm
9	Pathway 2 Christmas Stay & Play 1.30 – 2.30pm more information to follow
10	Pathway 2 Christmas Carols & Crafts 1.30–2.30pm more information to follow
11	Post 14 Coffee Morning – 9.30 – 10.20am
11	Early Years Nativity – 1.30pm
12	Pathway 4 Christmas Event (pm) more information to follow
12	Early Years Nativity – 9.30am
13	Christmas Fair
15	Hanukkah Early Years Parent Support Group at Russell House – 9.30 – 10.30am
16	Pathway 1 Christmas Stay and Play – 9.20am-10.20am – Lime, Yew, Fir, Pine 10.30am-11.30am – Holly, Beech, Fig, Elm 11.30am-12.30pm – Cedar, Alder, Larch
17	Christmas Dinner Day
19	Christmas Jumper Day
19	BREAK UP FOR CHRISTMAS

Please note: all the above dates / times are subject to change.

Please can we remind all Parents & Carers to keep the school office updated with any change of details, i.e, telephone numbers, addresses, list of contacts. Thank you