



Newsletter Friday 8th May 2026

www.wfs.worcs.sch.uk

office@wfs.worcs.sch.uk

Information for Parents



Today we say goodbye to John Caldwell our fabulous Site Manager. He has been at WFS since the school opened 11 ½ years ago. He has always put the health and safety of the children and staff at WFS first and led the development of the building as we have grown. Thank you John for everything you have done for WFS, and we all wish you the very best for the next exciting chapter in your life and the wonderful travel plans you have.

Remember that the School Fair is tomorrow. 11am to 1pm (Please note the new timings). The doors will not be open until 11am. Please come and support the Friends of Wyre Forest School because all the money they raise helps provide things for the children of WFS that we as a school could not afford.



Join us for our Spring Fair on
Saturday 9th May between 11am- 1pm

Get involved with our popular raffle which include prizes such as:

- . Tickets to West Midlands Safari Park
- . Tickets to Attwell Farm Park
- . Tickets to 360 Play in Redditch

and much more for just £1 per ticket!

Raffle will be drawn Tuesday 19th May 2026 at 2pm.

Tickets can be purchased from the fair and will also go out in
student bags.

Please bear in mind doors will remain closed until 11am to ensure
everyone gets a fair chance to purchase what is available.

Please don't forget to pre-book your child's dinner choices for next term through

MyChildAtSchool

Is my child too ill for school?



It can be tricky deciding whether or not to keep your child off school when they're unwell.

For guidance on when a child should or should not attend school due to illness, the NHS provides helpful information at:



www.nhs.uk/live-well/is-my-child-too-ill-for-school.

If you do keep your child at home, it's important to phone school on the first day of your child's absence and let us know the reason they are absent.



Government guidelines explain when children need to be kept off school for certain illnesses and when they can return. These rules help protect everyone's health and make sure children don't miss school unnecessarily.





PARENT POP-IN WFS PARENTS AND CARERS



Every Monday
from 2pm
in our Family
Hub

Come along to access any support that you may require around SEND, finances, Behaviour, sleep, housing, transport and much more!

With Donna Lester – Senior Family Support Worker

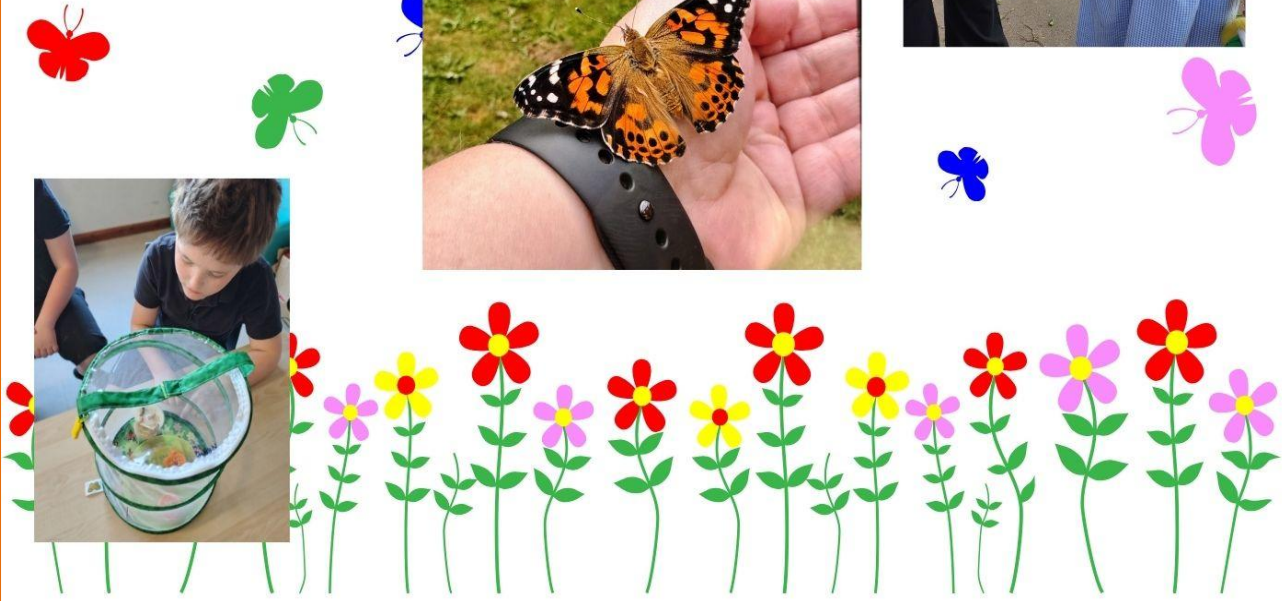
Calendar Dates

Please find information and times of school events for 2026 at the end of the newsletter.

Larch class update



The butterfly have emerged from their Chrysalis



JUNIPER CLASS

This half term Juniper Class have been working on our new Pirates topic, creating flags and paint blowing! They have also been trying very hard in PE working on their Pilates skills and in World about Us they have been learning about road safety. Juniper Class have gained some green fingers down at the allotment and are taking great care of their fruit and veg!



SPRUCE CLASS

Wow what an exciting few weeks we've had in Spruce Class.

The children have been exploring our new book in Literacy. We are exploring Emma Jane's Aeroplane. We've been exploring synonyms and learning more about holding and writing sentences.

Literacy

We were very lucky to have a group of students from Kidderminster College to lead a P.E. session the children had a fantastic time and joined in with all of the activities.

In P.E the children have looked at team games and how tactics and communication can be used to achieve a goal . The children have also had a great time in Forest School learning how to use and create maps.

In Maths the children have been looking at a number of different topics. Some children have been focusing on number formation and addition. Others have been looking at more and less and some are venturing into early multiplication.

Maths

In World About Us we have been looking at weather. The children have been looking at weather reports and creating their own weather maps. We have also been exploring seasons and the children have enjoyed have creating appropriate outfits for all seasons

World About Us





Spruce Class

Olive Class

We have been learning about our hometowns in Olive class and the different shops and services we would find on the high street.

We had a lot of fun creating our own high street in class. We worked collaboratively in pairs to create our shop, find the things we were going to sell and then produce price labels for them.

We then all took turns going down the High Street and making our purchases.

Photos



Olive Class

WFS

More photos!



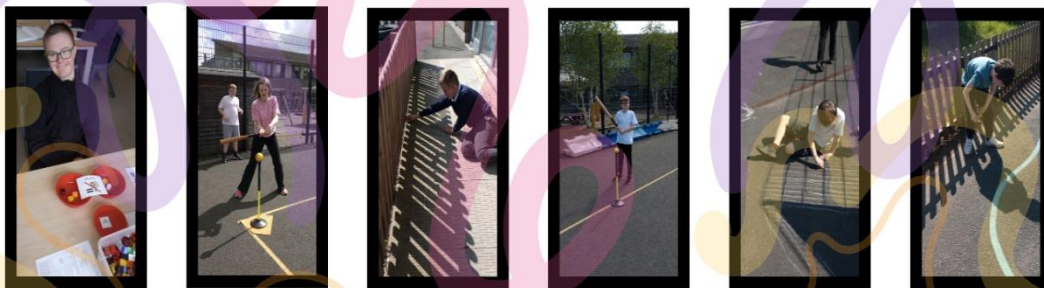


OAK Class

Oak class have been working very hard this half term. In maths the pupils have been learning about measurement. The pupils have been measuring the length and height of objects using a variety of non-standard and standard units of measure. Some pupils have compared measurements and recorded their answers using cm's.

Art lessons have focussed on the work of Georges Sauret and how he created images using pointillism techniques. The pupils have identified how creating small dots of colour can produce an image.

Finally, our garden make-over project is beginning to bloom! The pupils have worked so hard since September to remove all of the weeds and rubbish, and we now have a range of sweet peas, sunflowers and carrots that are about to bloom! What a marvellous transformation!



Walnut Class

Emma Jane's aeroplane

Walnut class have had a great half term with their topic Are we there yet? - the pupils have loved having a go at alliteration and rhyming words in Literacy as well as learning all about extreme weather conditions in World About us. We have really enjoyed our bike track slot this half term and the pupils have shown some real progression over the weeks. We have been enjoying weekly library visits for the children to choose and enjoy their own books and our voting system for the daily story is still proving to be very popular. In Forest school we have been starting to learn about maps and how to use a compass to identify north and south. Well done Walnut class!



4C

Geography and Science



We have been learning about continents, oceans and hemispheres in Geography and we have been discussing different weather and climates.

In science we have been learning about different habitats, both extreme and local. 4C have been out and about looking at local habitats. We have also checked in on our strawberries!



4C

Physical Education



We have been preparing for Sports Day in P.E. We have been practicing our jumping ready for long jump and high jump.



4C

Group Work



Discussing online safety



**Discussing changes in
our strawberries**



**Completing metaphors in
Literacy**



4D

WFS

Key Information this week

What a lovely month for 4D! We have been working hard to develop our understanding of poetry and the variety of poem forms. In Science, we are building our understanding of habitats and the creatures growing within them. At the end of the half term, we will be building our own habitats for animals in the local environment. In PE, we are developing our athletics skills and got creative by hopping our way to victory! In PSHE, we are developing our understanding of touch and personal space. We have a lot to learn this term!

Key Days

11th May- Walking trip to the Co-op. Please send in a voluntary contribution of £2 before the trip. If you are able to, please bring a coat / sunhat / sun cream / footwear suitable for the weather on the day. ✨

Activities this Week



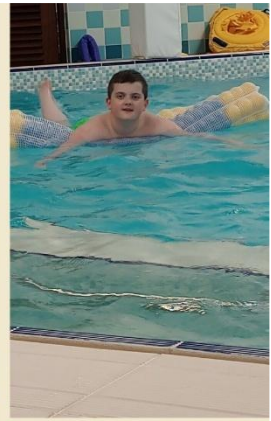
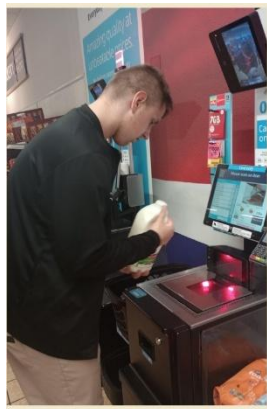
RUSSELL HOUSE

TUESDAY Swimming Shopping

WEDNESDAY Trimpley

THURSDAY Top Barn Cricket







Supporting Special-Needs Families in Wyre Forest

Charity No. 518349

HANSEL & GRETEL SUPPORT GROUP

Reg. Charity No. 518349

We are a registered charity providing mutual support and friendship to children with special educational needs & disabilities and their families in the Wyre Forest Area.
 We provide the opportunity for families to meet, share ideas and experiences, build friendships and overcome isolation.
 For more information, please contact us on 07525-668608, check our Facebook page (Hansel and Gretel Support Group @HandGSupport) or visit www.hanselgretel.org.uk

10am-12pm at Kidderminster Youth House, Bromsgrove Street, DY10 1PF
 Please use Public Pay & Display Car Park Opposite (Free with Blue Badge).
 Parking also available in KDYT car park – please pay & display.
 Sign in for name labels on arrival.
 No entry charge but £5 family donation appreciated.
 No diagnosis required.



Mark and Rowan Action Songs & baby rabbit therapy

10am – 12pm



SENDIASS Training at your Family Hub

FREE SEND Workshops

Supporting your child to cope with change School Readiness



10am-12pm

A FREE 2 week workshop for parents/ carers of children due to start school in the next few years.

- **Brookside Family Hub- Kidderminster**
Tuesday 21 and 28 April 2026
- **Holly Trees Family Hub- Redditch**
Thursday 7 and 14 May 2026
- **WANDS Family Hub- Droitwich**
Thursday 11 and 18 June 2026

Find out more and book your free space





Online Information Session

Every Child Achieving and Thriving SEND Reform Consultation



www.hwsendiass.co.uk



This session is for parents and carers of children and young people with SEND in Herefordshire and Worcestershire who want to find out about the proposed changes to the SEND system and how they can share their views.



SENDIASS are running two online information sessions about the SEND Reform Consultation.

Further information and booking links can be accessed here: [SENDIASS Information session on Every Child Achieving and Thriving SEND Reform Consultation](#)

Dates for the sessions are Wednesday 13 May 2026 (5:00pm to 6:30pm) and Thursday 14 May 2026 (1:00pm to 2:30pm) Online via MS Teams

This session will:

- Explain the proposed SEND reforms
- ✔ Help you understand how to share your views
- ✔ Give you the chance to ask questions

The session is FREE and open to anyone with an interest in special educational needs and disabilities.

👉 Find out more and book your place here: <https://tinyurl.com/2yx7ruy3>

NEW VENUE

KIDDERMINSTER

SEND Views & Voices
 Support, solidarity & sanity for anyone supporting a child or young people with special educational needs or disabilities (SEND)

Refreshments included

A friendly, non-judgmental SEND community

WEDNESDAY
 13 MAY 2026, 1:00PM - 2:00PM
 27 MAY 2026, 1:00PM - 2:00PM

VENUE
 BROOKSIDE FAMILY HUB, BORRINGTON ROAD, KIDDERMINSTER, DY10 3ED

WORCESTERSHIRE FAMILY HUBS

Worcestershire PARENT CARER FORUM

IMPORTANT DATES

Please note: all the dates/times below are subject to change.

Please can we remind all Parents & Carers to keep the school office updated with any change of details, i.e, telephone numbers, addresses, list of contacts. Thank you

May 2026	
9	Spring Fair – 11.00am – 1.00pm
13	Pathway 4 Jobs Event – 1.25pm (pupils only, Year 7 upwards)
14	Post 14 Coffee Morning – 9.30am – 10.20am – Parents/Carers invited
18-22	Pathway 1 WYRE FEST Music Week
21	Early Years Teddy Bears Picnic – 1.30 – 2.30pm
21	Supported Internships talk – 9.30 – 10.30am (Post 14 and Post 16 parents and students)
22	BREAK UP FOR HALF TERM
25 th -29 th	Half term

June 2026	
1	PUPILS RETURN TO SCHOOL
1	Early Years Parent Support Group at Russell House with Sophie Keyte – Paediatric OT – 9.30 – 11am
2	Pathway 3 & 4 Music Festival – 1.30pm, in the Orchard outside area, Parents invited.
3	Eid
5	Y8 HPV vaccines – more information to follow
8	Pathway 2 Sports Day – 9.30 – 11.00am – Ash, Poplar, Willow, Rowan, Hazel 1.15 – 2.45pm – Birch, Chestnut, Hawthorn, Maple, Cherry
10	Pathway 1 Sports Day – 1.15 – 2.15pm Secondary Playground - Cedar, Alder, Larch, Holly, Elm 1.15 – 2.15pm – Primary Playground - Lime, Beech, Fir, Pine, Fig, Yew
12	PRIDE - 6 th Form
17	Pathway 3 & 4 Sports Day – more information to follow
17	New Reception Parents Meeting – 5pm
19	Sparkle Day Father's Day Gift Shop
23	Post 14/16 Sports Day
26	Year 11 & 6 th Form Leavers Party – 1.45pm
29	Early Years Pathway information, resources and support for summer holiday at Russell House – 9.30 – 10.30am

July 2026	
2	Early Years Sports Day and support from SALT– 1.30 – 2.45pm
7	Pathway 2 End of Year Celebration – 10.30 – 11.30 – Ash, Poplar, Willow, Rowan, Hazel 1.30 – 2.30pm – Birch, Chestnut, Hawthorn, Maple, Cherry
8	Early Years End of Year Celebration – 1.30 – 2.30pm
9	Parents new to 6 th Form meeting – 9.30-10.30am
10	The Lodge End of Year Celebration – 1.30pm
13	Pathway 1 End of Year Celebration and Summer Picnic – 1.15 – 2.30pm Secondary Playground – Cedar, Alder, Larch, Holly, Elm 1.15 – 2.30pm – Primary Playground – Lime, Beech, Fir, Pine, Fig, Yew
14	Post 14 End of Year Celebration – 1.30 - 2.30pm
15	Pathway 3 Celebration Assembly – 1.30pm
16	Pathway 4 End of Year Celebration - more information to follow
17	BREAK UP FOR SUMMER